

5.4.3 REINFORCING STEEL

5.4.3.3 Special Applications

The maximum length of #3 and #4 bars shall be 40'. The maximum length of #5 through #18 bars shall be 60'.

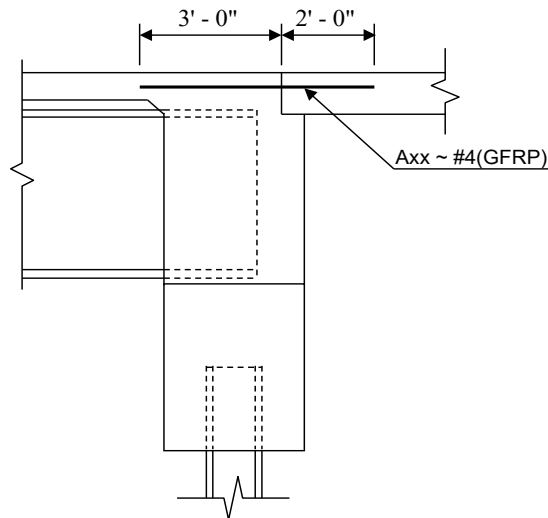
Specify AASHTO M31, Grade 60, Type S reinforcement for normal use. Specify AASHTO M31 Grade 60, Type W reinforcement if the yield strength needs to be limited or the reinforcement needs to be welded.

GLASS FIBER REINFORCED POLYMER (GFRP) REINFORCEMENT

'Glass Fiber Reinforced Polymer (GFRP) Reinforcement' shall be in accordance with Section 576.

Use in Integral Abutment to Approach Slab connection

The reinforcement is to be a #4 spaced at 12" on center and called out as shown in the diagram.



Revisions:

May 2014	Added GFRP information.
Nov 2019	Changed the reference to Section 576 of the Standard Specifications and deleted the special provision.
Oct 2023	Added direction for use of Type S or Type W reinforcement.